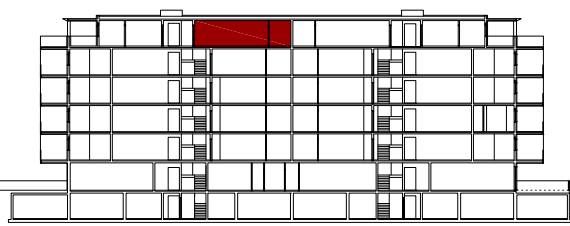
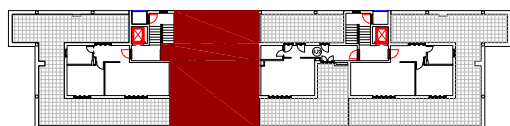
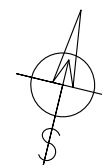
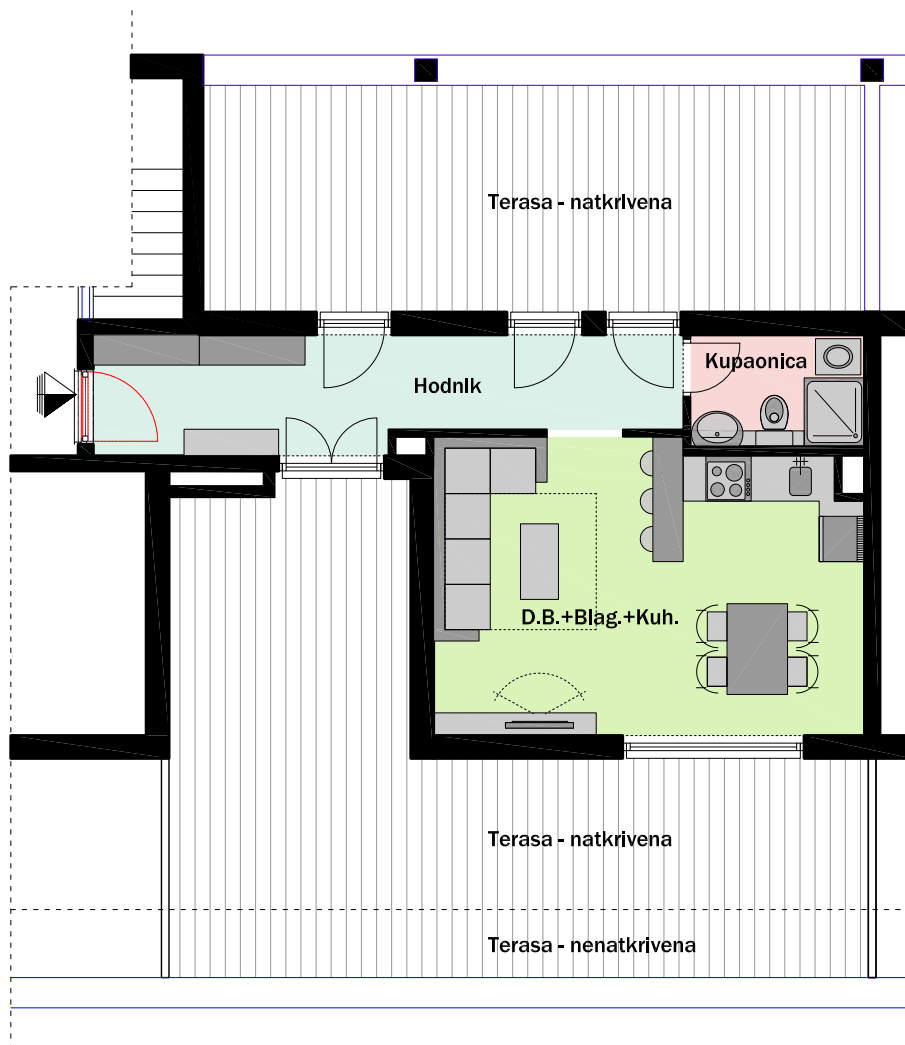


Nadgrađe - ulaz B - STAN B22



VUKOVARSKA - ulaz B Nadgrađe B22 - garsonjera	
Hodnik	11,10 m ²
D.B. + Blag. +Kuh.	21,67 m ²
Kupaonica	3,38 m ²
UKUPNO ZATVORENO	36,15 m²
Terasa - natkrivena	55,67 x 0,5 = 27,84 m ²
Terasa - nenatkrivena	8,32 x 0,25 = 2,08 m ²
UKUPNO OTVORENO	29,92m²
UKUPNO STAN B22	66,07 m²

MJ 1:100