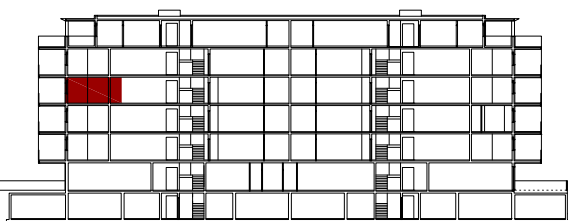
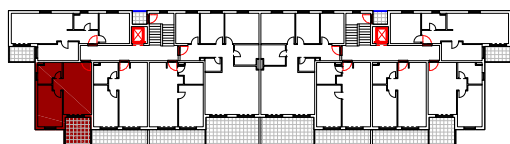
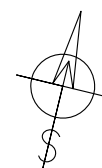
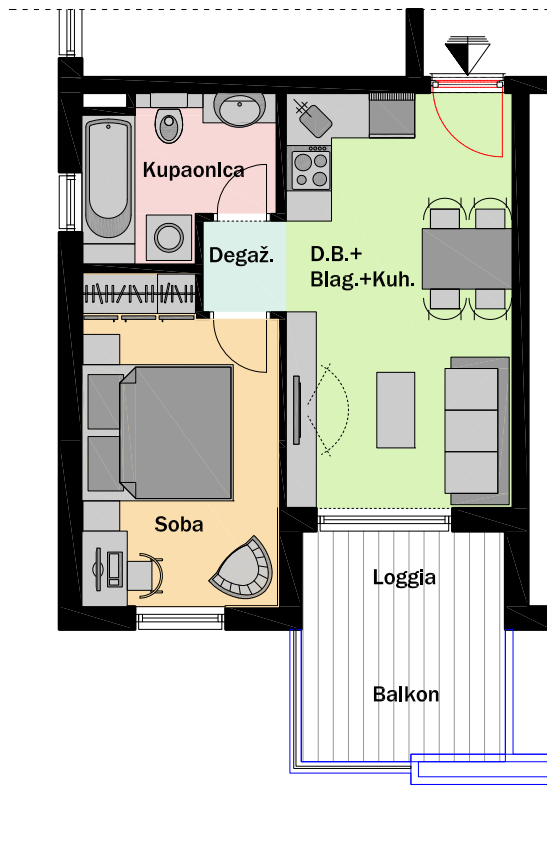


### 3. Kat - ulaz B - STAN B12



VUKOVARSKA - ulaz B	3. Kat	B12 - jednosobni
D.B. + Blag. +Kuh.		16,50 m <sup>2</sup>
Degažman		1,32 m <sup>2</sup>
Kupaonica		4,90 m <sup>2</sup>
Soba		10,78 m <sup>2</sup>
<b>UKUPNO ZATVORENO</b>		<b>33,50 m<sup>2</sup></b>
Loggia	3,50 x 0,75 =	2,63 m <sup>2</sup>
Balkon	4,73 x 0,5 =	2,37 m <sup>2</sup>
<b>UKUPNO OTVORENO</b>		<b>5,00m<sup>2</sup></b>
<b>UKUPNO STAN B12</b>		<b>38,50 m<sup>2</sup></b>



MJ 1:100