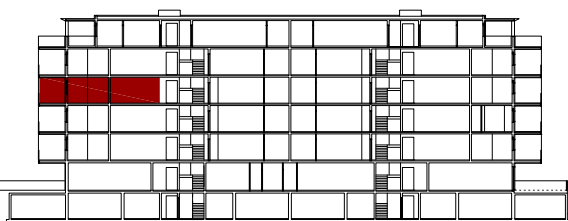
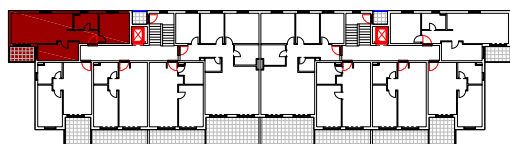
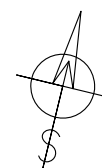
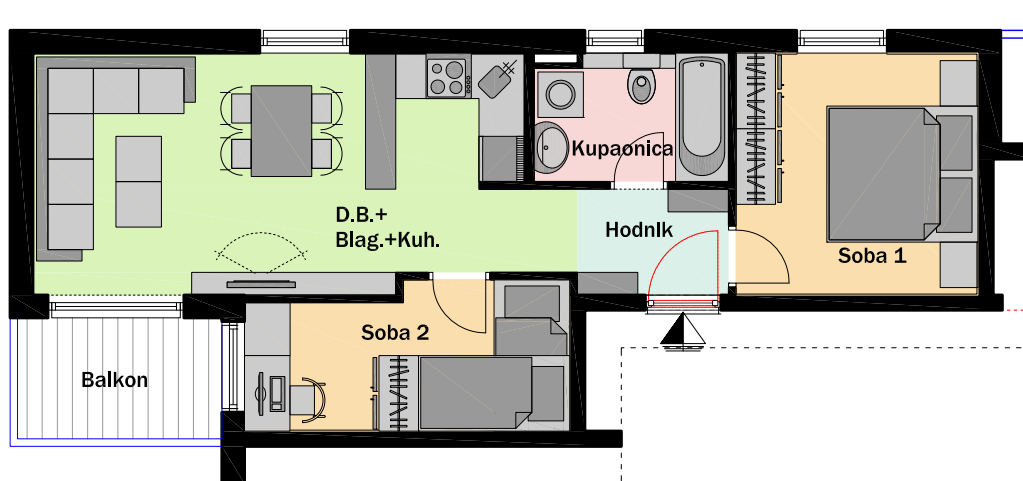


### 3. Kat - ulaz B - STAN B11



VUKOVARSKA - ulaz B 3. Kat B11 - dvosobni	
Hodnik	2,80 m <sup>2</sup>
Soba 1	10,24 m <sup>2</sup>
Kupaonica	4,24 m <sup>2</sup>
D.B. + Blag. +Kuh.	21,06 m <sup>2</sup>
Soba 2	7,97 m <sup>2</sup>
<b>UKUPNO ZATVORENO</b>	<b>46,31 m<sup>2</sup></b>
Balkon	4,32 x 0,5 = 2,16 m <sup>2</sup>
<b>UKUPNO OTVORENO</b>	<b>2,16 m<sup>2</sup></b>
<b>UKUPNO STAN B11</b>	<b>48,47 m<sup>2</sup></b>



MJ 1:100